

# Scrutinizer NetFlow & sFlow Analyzer



Technology  
Developer  
Partner



**Scrutinizer**<sup>TM</sup> v4.0  
NetFlow & sFlow Analyzer

## Scrutinizer NetFlow and sFlow Analysis

Scrutinizer is a NetFlow and sFlow analyzer that provides incredibly detailed network utilization information for the users and applications that are on the network. Using both Cisco's NetFlow Technology (an IOS software feature found in an ever increasing number of switches and routers) and industry standard sFlow, Scrutinizer is able to retrieve the traffic details you need and present them in a detailed graphical view.

### Distributed Analysis using existing routers

Learn all the above without deploying probes. Scrutinizer taps into functionality already possible with your existing equipment. Just enable NetFlow or sFlow on your existing routers and point the flow to the machine Scrutinizer is installed on. Then, from any web browser, gain tremendous insight into the traffic patterns on your network. Quickly gain details on *who*, *what*, *when* and *where*.

You may be surprised what you find.

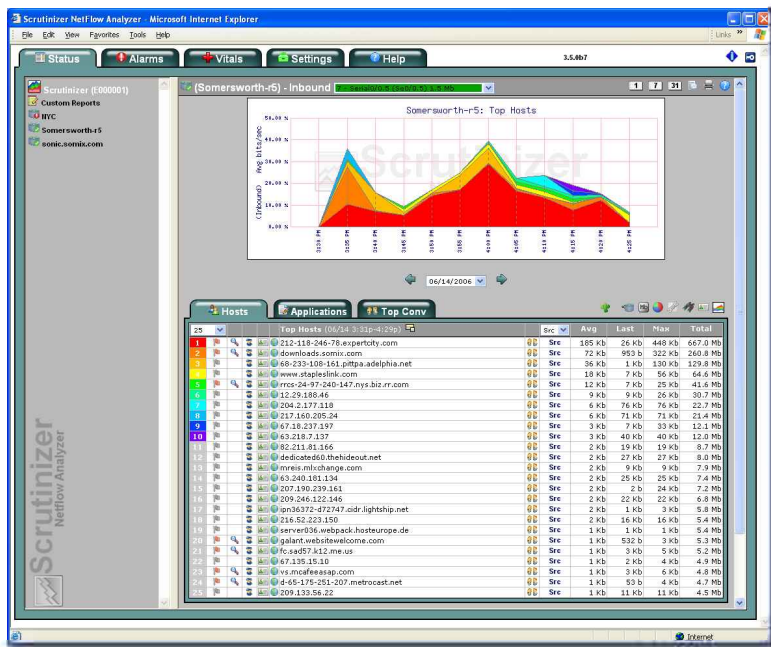


Figure 1: Top Hosts

### Learn from Scrutinizer

- What are the trends of user traffic for certain applications?
- How much VoIP do you have on your network and who is involved with the most calls?
- What traffic could benefit from prioritization?
- What are the systems involved with a virus?
- Why are certain servers communicating using strange protocols?
- What applications are having the largest impact on the infrastructure?

### How it works

Most major switch and router vendors support technologies called NetFlow or sFlow. Vendors include: Cisco, Enterasys, Extreme, Foundry, Juniper, Riverstone and Packeteer. Once Scrutinizer is installed on a computer, configure the switches to send the NetFlow or sFlow information to Scrutinizer. In just a few minutes, you will have traffic details from several geographically disparate locations on your network.

"We have been using another product, but I use Scrutinizer on a large network. It's an invaluable tool for determining the "who, what, and where" of network activity. Scrutinizer is a world-class product with an intuitive and easy-to-use interface. It's feature rich and a much lower cost than other NetFlow management products."  
- State of Maine

"I started using the freeware version of this new tool and I must say it's already been helpful. It takes the per packet info from the NetFlow streams you configure on your Cisco router and displays it in an easy to use web interface. I've known how much traffic I had on my interfaces, but didn't know what the content of the traffic was. I was able to identify the cause of a network link running slow because of one user transferring a huge file during the day over a slow link. Saved me a lot of time troubleshooting the old fashion way!"  
- Central Maine Power

We deliver the tools you need...

Plixer International, Inc. designs, develops and services NetFlow products and solutions for small and medium sized businesses. Our technical support and installation services ensure that every installation works with your existing software investments.

### Hardware Specifications

- Windows 2000 class OS
- 1024 Megs of RAM
- IDE or SATA Hard Disk
- 1.5 GHz+ processor
- Minimum 15 Megs of hard drive space for program files
- Minimum 40 Gigs of hard drive space



Technology Developer Partner

### Scrutinizer helps remove the guess work

Scrutinizer will quickly become one of the first tools you reference when the boss asks, "Why is it so slow?" Scrutinizer's "Simple Flow Guide™" will lead you from a high level interface down to a specific router, interface, user, application. Incredibly FAST!

### Easy Reports

Built around a fundamentally simple design philosophy, Scrutinizer's learning curve couldn't be shorter. From specifying time frames with Drag & Drill™ or locating specific hosts with the Host Search, everything just makes sense.

### Custom Reporting

Custom Reports will allow the user to configure very detailed reports:

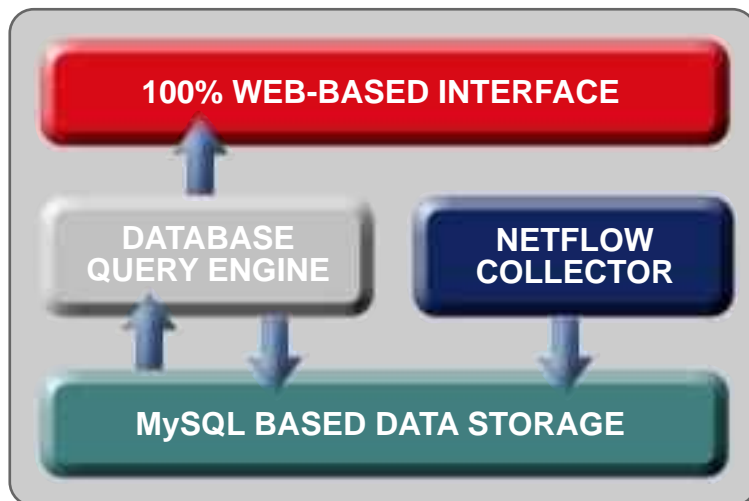
- IP Addresses, ranges and subnets
- Port numbers and ranges
- Defined Applications which include ranges of protocols
- Combine interfaces from multiple routers
- Specify bandwidth for the combined interfaces
- Scalable interface for hundreds of routers
- Security support for service providers wanting to give customer access to only specific data

### Service Levels

Scrutinizer allows you to verify application availability while simultaneously letting you review traffic levels. For example, you can see if several people were, in fact, getting their email.

### Conversation Reporting

Scrutinizer allows users to view conversation information being transferred between hosts. This is useful in determining not only what hosts are talking to each other the most, but what protocol is being used as well.



### FLOG and Capture

Alarm Conditions trigger FLOGs, which result in the capture of every conversation a specific host is having until the file size threshold is met (e.g. 1 megabyte).

### Real-Time Display

Scrutinizer is the world's first real-time web-powered NetFlow and sFlow trending tool. Its architecture scans thousands of conversations per second and extends information in an easily comprehensible format.

It can trend the following real-time:

- Top Applications
- Top Hosts
- Top Applications per Host
- Top Hosts per Application
- Top Conversations

### Historical Trending

Scrutinizer saves detailed data for 31 days, in 5 minute intervals, which gives you the data needed to look back and see trouble ahead. One year trending is also available.

### Application Grouping

Sometimes applications can use a number of different protocols. Scrutinizer allows users to specify ranges of protocols and group them as a single type of application.

### Vital Signs

When you have questions on whether or not the hardware can handle the amount of flows being transmitted to it, view the health of Scrutinizer.

### VoIP Analysis

Voice over IP (VoIP) Analysis is assisted by Scrutinizer by verifying:

- How much voice traffic is historically on the connection
- What devices are involved with the most VoIP traffic

### The Best Value in NetFlow

Regardless of your reason for choosing Scrutinizer, you'll easily recognize the value it brings to your Cisco equipment and your team.

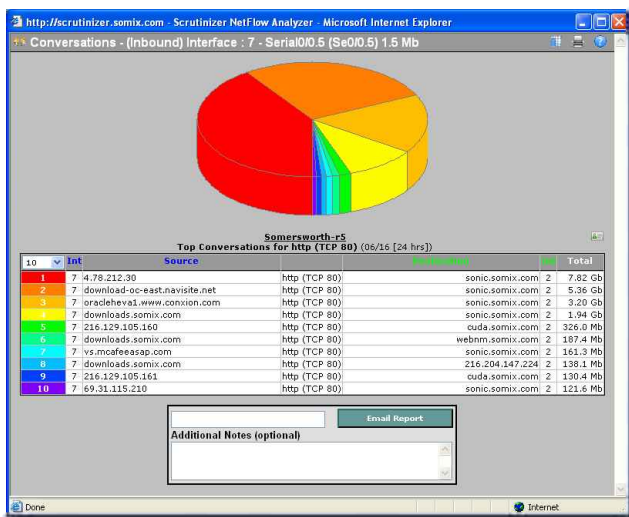


Figure 2: Conversation Reporting

If it is more top level conversation reporting that is needed, Scrutinizer provides any easily accessible interface that gives high level information on the top conversations getting saved.

### Alerting on Events

Scrutinizer uses configurable traffic rules to automatically alert you when trouble is recognized.